

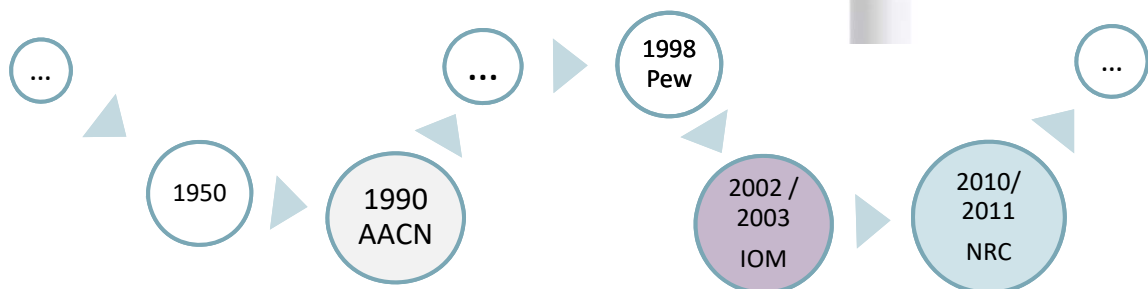
# Lehre, Forschung, Praxisentwicklung – eine Akademie-Praxis-Partnerschaft verbindet

Prof. Dr. Kai-Uwe Schmitt

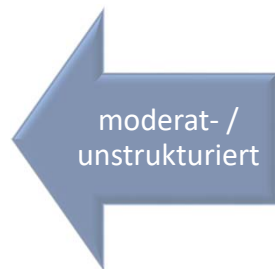
► Gesundheit

## Hintergrund

- Academic Practice Partnership (APP)
- Academic Service Partnership (ASP)



## Strukturen



- ▶ z.B. Informationsaustausch, projektbezogene Zusammenarbeiten



- ▶ gemeinsame strategische Ziele
- ▶ Organisation, Einbindung in Institutionen
- ▶ Konzept, Vertrag
- ▶ Budget

Berner Fachhochschule | Gesundheit | APP

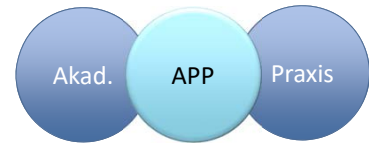
## Themen / Ausrichtung



- ▶ Fokus:
  - ▶ Ausbildung
  - ▶ (klin.) Praxis
  - ▶ Öffentl. Gesundheitswesen
  - ▶ Forschung
  - ▶ Personal/ Rekrutierung
  - ▶ Business

Berner Fachhochschule | Gesundheit | APP

## Motivation zum Aufbau einer APP

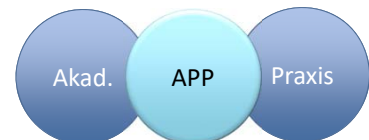


- ▶ Bessere Aus-/Weiterbildung
  - ▶ Praxiserfahrung für akademische Dozenten <> Rekrutierung von Dozenten aus der Praxis
- ▶ Wissenstransfer zwischen Theorie und Praxis
- ▶ Zugang zu Forschung / Zugang zum Praxispartner
- ▶ MA-Entwicklung, Karriere
- ▶ Zugang zu Informationen (Daten, Literatur)
- ▶ Zugang zu finanziellen Mitteln (Drittmittel)

[Sadeghnezhad et al., 2018]

Berner Fachhochschule | Gesundheit | APP

## Aufbau einer APP



- ▶ American Association of Colleges of Nursing (AACN):
  - ▶ 1) Nachhaltigkeit ("sustainability")
  - ▶ 2) Respekt ("respect")
  - ▶ 3) Wissen teilen ("shared knowledge")
  - ▶ 4) Ermöglichen ("helping nurses practice at the top of their licenses")
  - ▶ 5) Transfer in die Praxis ("facilitating transition to practice")
  - ▶ 6) Prozesse und Organisation ("organizational processes and structure")
  - ▶ 7) besserer Outcome durch bessere Praxis ("enhancing practice environments to improve health outcomes")
  - ▶ 8) Zukunft der Pflege adressieren ("shared work on the future needs of the RN workforce")

Berner Fachhochschule | Gesundheit | APP

## Aufbau einer APP



Inputs	Activities	Outputs	Outcomes
Partnership champions Compatible philosophies Common vision Key stakeholder commitment Formalized partnership agreement Shared goals and accountabilities Dedicated time and resources (human and fiscal)	Open, ongoing communications Shared decision-making Professional development	Action plans Strategic plans	Successful completion of short-term (action plan) goals Successful completion of long-term (strategic) goals

[MacPhee, 2009]

Berner Fachhochschule | Gesundheit | APP

## Erfahrungen

### Promotoren

- ▶ vorhandene Ressourcen, finanzieller Support
- ▶ gemeinsame Vision, Ziele, Mission
- ▶ starkes Leadership
- ▶ gemeinsamer Benefit
- ▶ gute Kommunikation, offener Dialog
- ▶ Vertrauen und Respekt
- ▶ ...

### Barrieren

- ▶ fehlende Ressourcen
- ▶ Zeitmangel, ungleicher Einsatz
- ▶ Differenzen hinsichtlich Kultur und Werten
- ▶ Konflikte betreffend Führung/ Kontrolle
- ▶ ...

Berner Fachhochschule | Gesundheit | APP

## Erfahrungen

Wurmser et al. (2011): ...thinking strategically... Strong academic–practice partnerships are increasingly viewed as crucial for the future of nursing.

Williams et al. (2017): ...can serve as a catalyst for a paradigm shift for changing models of care, thus enhancing workforce development...

Bender et al. (2019): ...over 18 years... it has evolved from an information-gathering taskforce into an Agency for Healthcare Research and Quality...

Battle (2018):... There's sufficient evidence that successful academic-practice partnerships are instrumental in improving patient outcomes and overall quality of care.

Huston et al. (2017): .. academic service partnerships must be formed at the highest managerial levels, be implemented by a joint committee of stakeholders, and be based on mutually beneficial and measurable goals

Berner Fachhochschule | Gesundheit | APP

## Akademie-Praxis-Partnerschaft (APP) zwischen Insel Gruppe und BFH-G

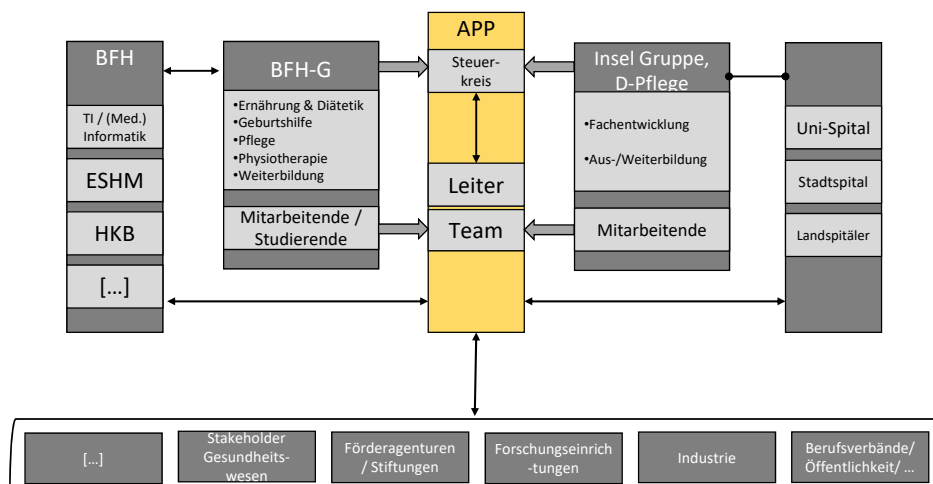
Berner Fachhochschule | Gesundheit | APP

# Akademie-Praxis-Partnerschaft



Berner Fachhochschule | Gesundheit | APP

# Organisation



Berner Fachhochschule | Gesundheit | APP

## Akademie-Praxis-Partnerschaft



Physiotherapie



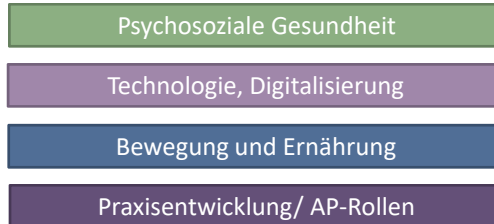
Ernährung & Diätetik



Pflege



Geburtshilfe



Berner Fachhochschule | Gesundheit | APP

## Akademie-Praxis-Partnerschaft BFH und Insel Gruppe

- ▶ Konzept, Vision, Mission
  - ▶ in beide Organisationen eingebunden
  - ▶ Struktur, Budget
- } hoch-strukturiert ✓
- ▶ Forschung, Praxis, Ausbildung
    - ▶ Forschungs-/Praxisentwicklungsprojekte
    - ▶ Praxiseinsätze von Studierenden/Dozierenden
  - ▶ Thematischer Fokus
  - ▶ Ausrichtung: interprofessionell !

Berner Fachhochschule | Gesundheit | APP

## Arbeitsweise



Berner Fachhochschule | Gesundheit | APP

## Akademie-Praxis-Partnerschaft BFH und Insel Gruppe

### ► Kontakt:

- Prof. Dr. Kai-Uwe Schmitt
- [kai-uwe.schmitt@bfh.ch](mailto:kai-uwe.schmitt@bfh.ch)
- <https://www.bfh.ch/gesundheit/de/>
- <https://www.bfh.ch/gesundheit/de/forschung/forschungsbereiche/app-insel-gruppe/>

Berner Fachhochschule | Gesundheit | APP



## Referenzen

- ▶ Battle (2018) Academic-practice partnerships and patient outcome. Nursing Management. [www.nursingmanagement.com](http://www.nursingmanagement.com). Jan 2018: 35-40
- ▶ Bender et al. (2019) Advancing the clinical nurse leader model through academic-practice-policy partnership. Nurs Outlook 67:345-353
- ▶ De Geest et al. (2013) Academic Service Partnerships: What do we learn from around the globe? A systematic literature review. Nurs Outlook 61:447-457
- ▶ Howard et al. (2017) An academic-practice partnership to advance DNP education and practice. J Prof Nurs 33:86-94
- ▶ Huston et al. (2017) The academic-practice gap: strategies for an enduring problem. Nurs Forum 53:27-34
- ▶ Sadeghnezhad et al. (2018) Mutual benefits in academic-service partnership: an integrative review. Nurse Edu Today 68:78-85
- ▶ Williams et al. (2017) An academic-practice partnership model to grow and sustain advanced practice in nursing. JONA 47:629-635
- ▶ Wurmser et al. (2011) Thinking strategically: academic-practice relationships: one health system's experience. J Prof Nurs 27:e114-e118